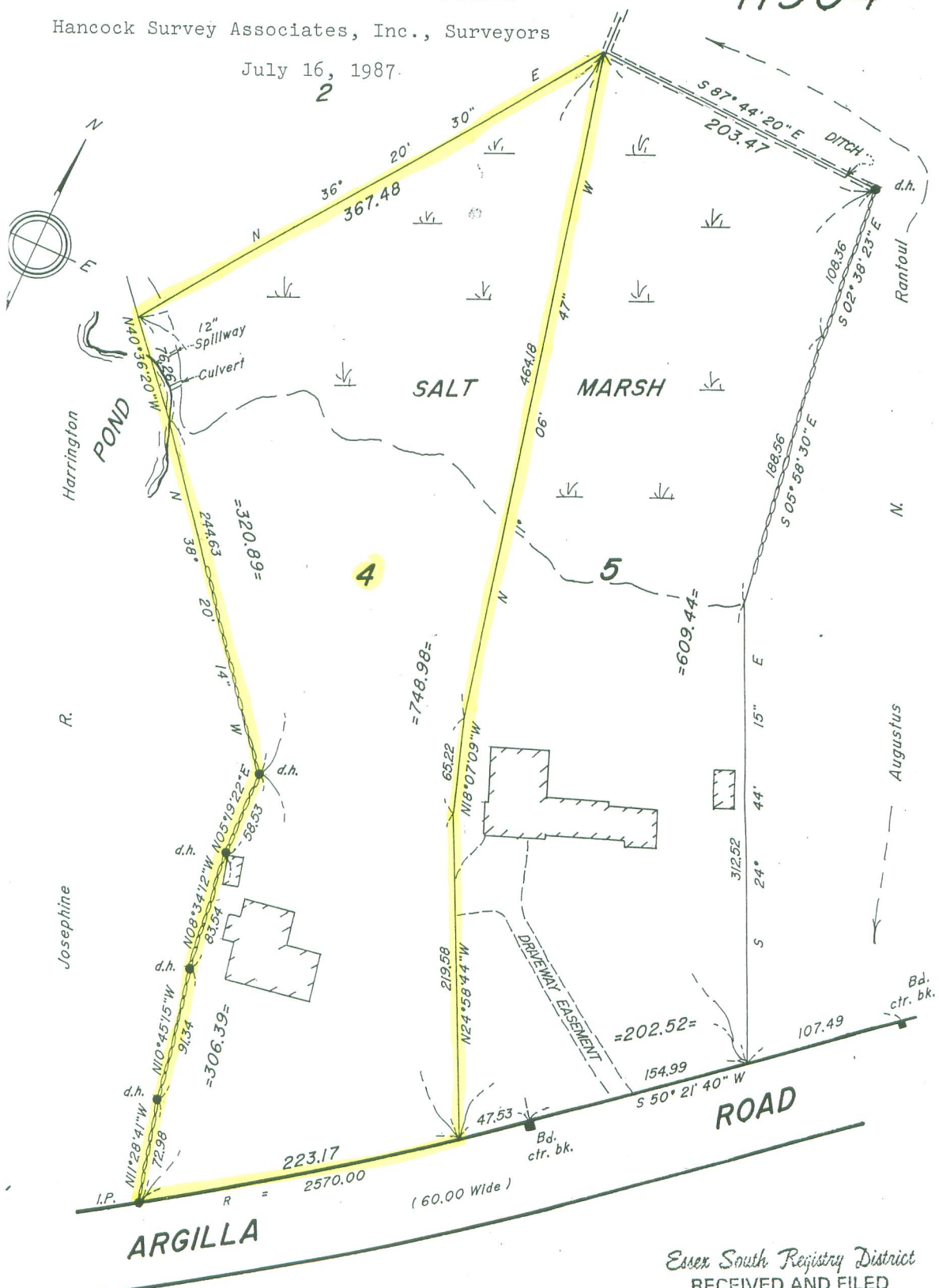


SUBDIVISION PLAN OF LAND IN IPSWICH  
 Hancock Survey Associates, Inc., Surveyors

July 16, 1987.  
 2

11904C



Subdivision of Lot 3  
 Shown on Plan 11904B  
 Filed with Cert. of Title No. 57638.  
 South Registry District of Essex County.

Separate certificates of title may be issued for land  
 shown hereon as... LOTS 4 and 5...  
 By the Court.

*Debra Frankly*  
 Recorder

Essex South Registry District  
 RECEIVED AND FILED  
 With Certificate No. 57663  
 Dec. 10, 1987

Abutters are shown as  
 on original decree plan.

Copy of part of plan  
 filed in  
 LAND REGISTRATION OFFICE  
 DEC. 3, 1987  
 Scale of this plan 80 feet to an inch